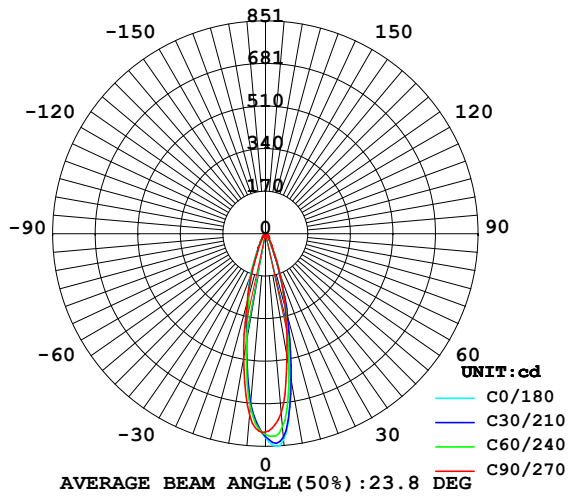


STREETLIGHT PHOTOMETRIC TEST REPORT

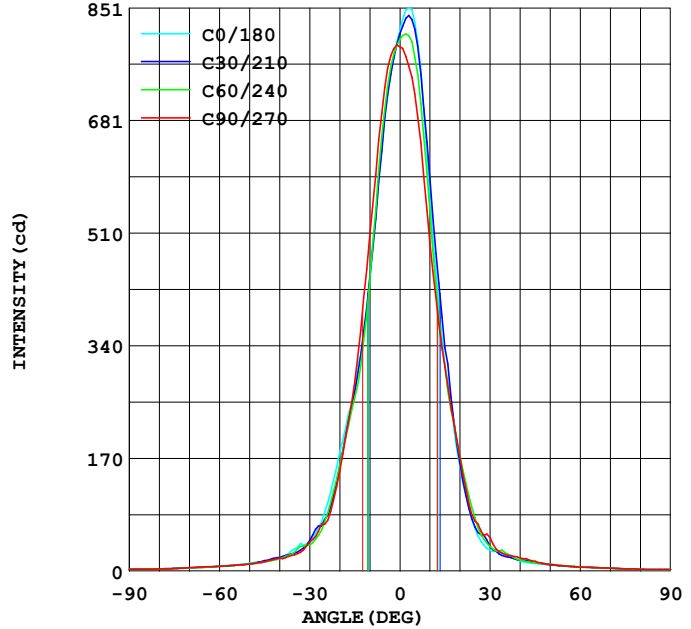
Report number: 0000113

MANUFACTURER: Fiberli	Address: PSL ELEKTRONİK ANTALYA	
NAME: CG1 Z503 G 25D 4W 220VAC 50HZ IP65	TYPE: CROMA GARDENA	WEIGHT:
SPECIFICATION: CROMA GARDENA 1	DIMENSION: 58X130mm 77R	SERIAL No.: 7878175

TEST DATA:					
MODEL:	CG1 Z503 G 25D 4W 220VAC 50HZ IP65	1855.6	η street_up (%) :	3.4	
NOMINAL POWER (W) :	4	MAXIMUM (C, γ) :	180, 3.0	η street_down (%) :	48.3
RATED VOLTAGE (V) :	220	TOTAL FLUX (lm) :	233.6	η house_up (%) :	2.8
NOMINAL FLUX (lm) :	233.6	EFFICIENCY (%) :	100.0	η house_down (%) :	45.5
TEST FLUX (lm) :	233.6	η up (%) :	6.2		
LAMPS QUANTITY :	1	η down (%) :	93.8		

INTENSITY DISTRIBUTION DIAGRAM
IN C PLANSINTENSITY DISTRIBUTION DIAGRAM
IN C PLANS

LUMINOUS INTENSITY DISTRIBUTION



Test: U: 220.3V I: 0.041A P: 4.390W PF: 0.480

Test System: LSG-1600
 Temperature: 23.4 DEG
 Operators: FATMA KARA
 Test Date: 01-08-2014

Test Set: 2.0deg/s C-Gamma (TYPE C)
 Humidity: 51%
 Test Distance: 9.545 m
 Remarks: CG1 Z503 G 25D 4W 220VAC 50HZ IP65

ZONAL FLUX DIAGRAM

Report number: 0000113

MANUFACTURER: Fiberli	Address:PSL ELEKTRONİK ANTALYA	
NAME: CG1 Z503 G 25D 4W 220VAC 50HZ IP65	TYPE:CROMA GARDENA	WEIGHT:
SPECIFICATION:CROMA GARDENA 1	DIMENSION: 58X130mm 77R	SERIAL No.:7878175

γ	C0	C45	C90	C135	C180	C225	C270	C315	γ	Φ zone	Φ total
5.0	685.1	681.2	729.8	798.7	828.0	804.2	720.2	649.2	0- 5	18.14	18.14
10.0	442.2	424.1	505.3	570.5	568.3	587.2	495.8	428.9	5- 10	42.21	60.35
15.0	275.2	262.9	284.6	326.6	309.9	333.3	307.5	281.1	10- 15	43.31	103.6
20.0	178.6	147.5	150.0	160.4	157.5	180.8	171.3	157.8	15- 20	35.20	138.8
25.0	88.28	74.61	70.42	70.24	64.50	78.16	75.25	83.36	20- 25	21.53	160.4
30.0	44.73	41.54	43.18	40.45	31.24	44.46	50.65	46.10	25- 30	13.71	174.1
35.0	33.07	23.87	24.59	21.04	25.05	24.69	24.69	26.87	30- 35	8.945	183.0
40.0	20.77	17.67	19.04	17.03	15.21	18.40	19.77	18.22	35- 40	6.862	189.9
45.0	14.75	13.39	13.93	13.30	11.47	15.30	14.57	14.66	40- 45	5.722	195.6
50.0	11.84	9.748	10.47	9.566	9.566	11.47	9.839	11.29	45- 50	4.722	200.3
55.0	9.110	7.106	8.655	7.197	7.470	9.019	7.470	9.019	50- 55	3.886	204.2
60.0	7.288	5.557	7.106	5.739	6.195	7.470	5.921	7.379	55- 60	3.300	207.5
65.0	5.921	4.646	6.013	4.646	4.919	6.013	5.101	6.104	60- 65	2.842	210.4
70.0	4.919	3.917	4.919	3.917	4.008	4.828	4.282	4.646	65- 70	2.431	212.8
75.0	3.644	3.188	3.462	3.279	3.097	3.735	3.370	3.553	70- 75	1.990	214.8
80.0	3.006	2.459	3.006	2.459	2.368	3.097	2.459	2.915	75- 80	1.591	216.4
85.0	2.824	2.186	2.733	2.186	2.186	2.824	2.277	2.642	80- 85	1.383	217.8
90.0	2.550	2.004	2.550	2.004	2.095	2.642	2.095	2.550	85- 90	1.296	219.1
95.0	2.550	2.095	2.459	2.004	2.095	2.459	2.004	2.459	90- 95	1.242	220.3
100.0	2.459	2.004	2.459	2.004	2.095	2.459	2.095	2.459	95-100	1.220	221.5
105.0	2.459	2.004	2.459	2.004	2.095	2.459	2.004	2.459	100-105	1.197	222.7
110.0	2.459	2.095	2.459	2.095	2.095	2.368	2.004	2.368	105-110	1.161	223.9
115.0	2.368	2.095	2.368	2.004	2.095	2.368	2.095	2.368	110-115	1.117	225.0
120.0	2.368	2.095	2.368	2.004	2.186	2.277	2.004	2.368	115-120	1.076	226.1
125.0	2.368	2.004	2.368	2.095	2.186	2.368	2.095	2.368	120-125	1.021	227.1
130.0	2.277	2.095	2.277	2.095	2.186	2.277	2.095	2.277	125-130	0.959	228.1
135.0	2.277	2.095	2.368	2.095	2.186	2.368	2.095	2.277	130-135	0.893	228.9
140.0	2.459	2.186	2.368	2.186	2.277	2.368	2.186	2.277	135-140	0.829	229.8
145.0	2.459	2.277	2.368	2.277	2.277	2.368	2.277	2.368	140-145	0.763	230.5
150.0	2.550	2.459	2.550	2.368	2.459	2.459	2.368	2.550	145-150	0.703	231.2
155.0	2.733	2.642	2.642	2.459	2.550	2.642	2.459	2.733	150-155	0.639	231.9
160.0	2.915	2.824	2.824	2.733	2.733	2.824	2.642	2.915	155-160	0.569	232.4
165.0	3.097	2.915	3.006	2.915	3.006	3.006	2.915	3.006	160-165	0.475	232.9
170.0	3.097	3.006	3.097	3.006	3.097	3.097	3.006	3.006	165-170	0.357	233.3
175.0	3.188	3.006	3.188	3.006	3.188	3.097	3.097	3.006	170-175	0.219	233.5
180.0	3.188	3.097	3.097	3.006	3.279	3.097	3.097	3.097	175-180	0.073	233.6
DEG	LUMINOUS INTENSITY:cd									UNIT:lm	

Test System:LSG-1600
Temperature:23.4DEG
Operators:FATMA KARA
Test Date:01-08-2014

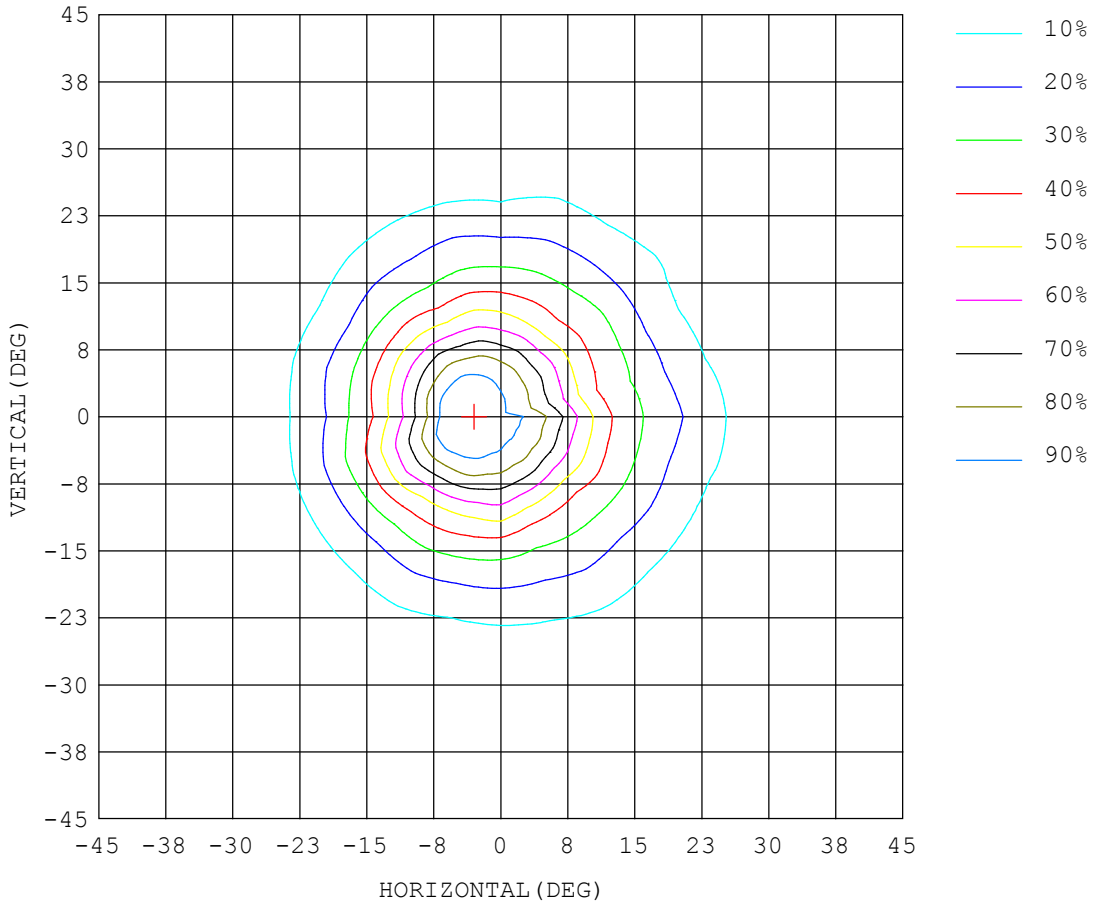
Test Set: 2.0deg/s C-Gamma (TYPE C)
Humidity:51%
Test Distance:9.545 m
Remarks: CG1 Z503 G 25D 4W 220VAC 50HZ IP65

ISOCANDELA DIAGRAM

Report number: 0000113

MANUFACTURER: Fiberli	Address: PSL ELEKTRONİK ANTALYA	
NAME: CG1 Z503 G 25D 4W 220VAC 50HZ IP65	TYPE: CROMA GARDENA	WEIGHT:
SPECIFICATION: CROMA GARDENA 1	DIMENSION: 58X130mm 77R	SERIAL No.: 7878175

UNIT: cd



Test System: LSG-1600
Temperature: 23.4 DEG
Operators: FATMA KARA
Test Date: 01-08-2014

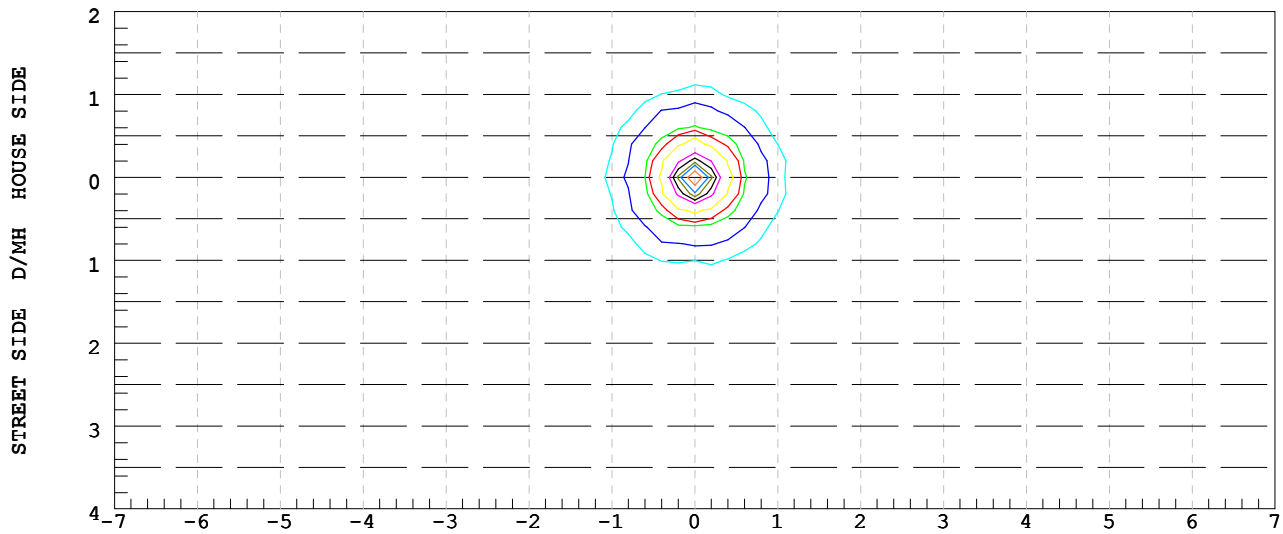
Test Set: 2.0 deg/s C-Gamma (TYPE C)
Humidity: 51%
Test Distance: 9.545 m
Remarks: CG1 Z503 G 25D 4W 220VAC 50HZ IP65

ISOLUX DIAGRAM

Report number: 0000113

MANUFACTURER: Fiberli	Address: PSL ELEKTRONİK ANTALYA	
NAME: CG1 Z503 G 25D 4W 220VAC 50HZ IP65	TYPE: CROMA GARDENA	WEIGHT:
SPECIFICATION: CROMA GARDENA 1	DIMENSION: 58X130mm 77R	SERIAL No.: 7878175

ILLUMINANCE AT MH=10 m, Enadir = 7.92 lx



0.040	0.079	0.240	0.400	0.790
2.4	3.2	4.0	4.8	6.3

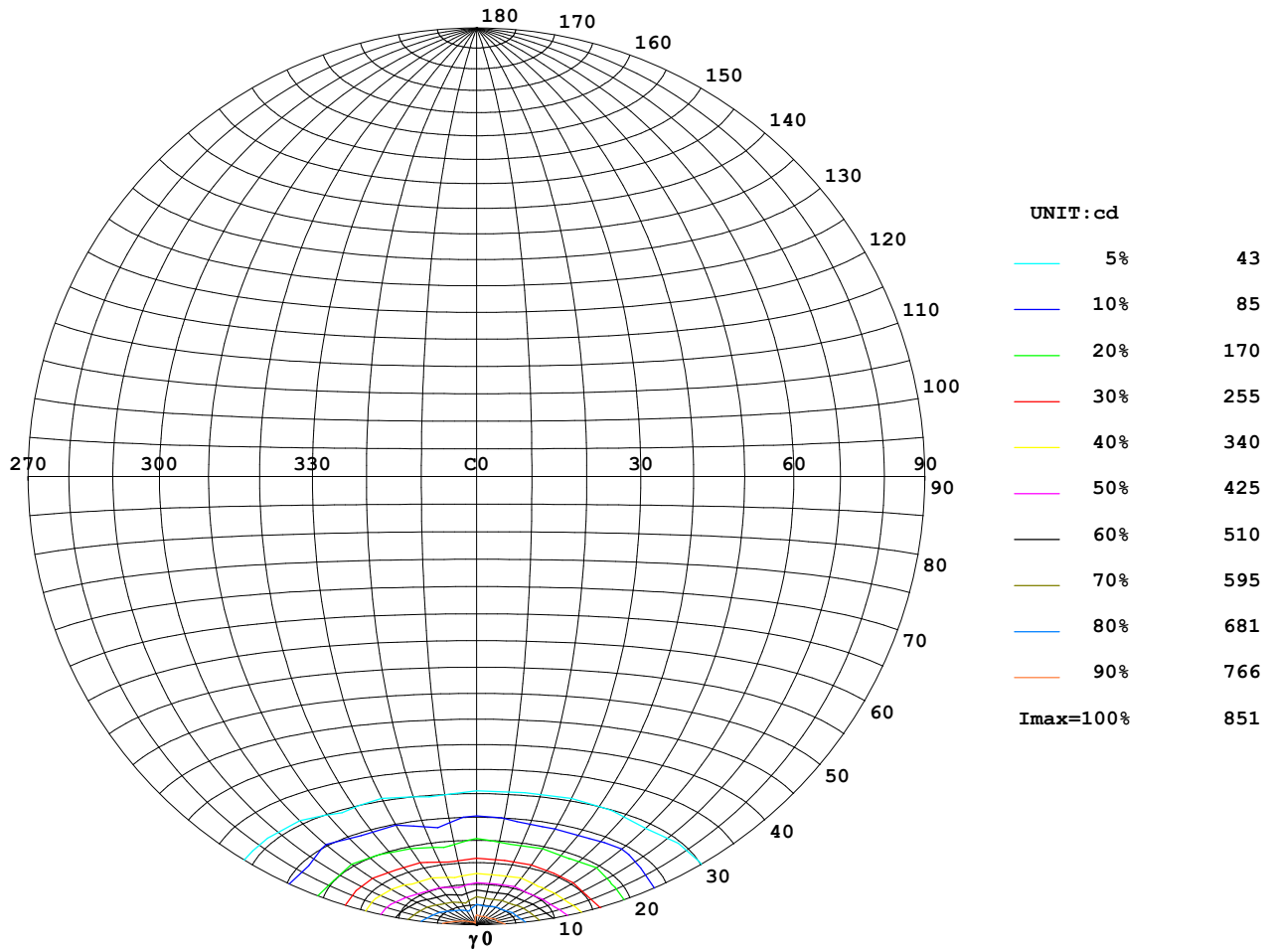
Test System: LSG-1600
 Temperature: 23.4 DEG
 Operators: FATMA KARA
 Test Date: 01-08-2014

Test Set: 2.0deg/s C-Gamma (TYPE C)
 Humidity: 51%
 Test Distance: 9.545 m
 Remarks: CG1 Z503 G 25D 4W 220VAC 50HZ IP65

ISOCANDELA DIAGRAM

Report number: 0000113

MANUFACTURER: Fiberli	Address: PSL ELEKTRONİK ANTALYA	
NAME: CG1 Z503 G 25D 4W 220VAC 50HZ IP65	TYPE: CROMA GARDENA	WEIGHT:
SPECIFICATION: CROMA GARDENA 1	DIMENSION: 58X130mm 77R	SERIAL No.: 7878175



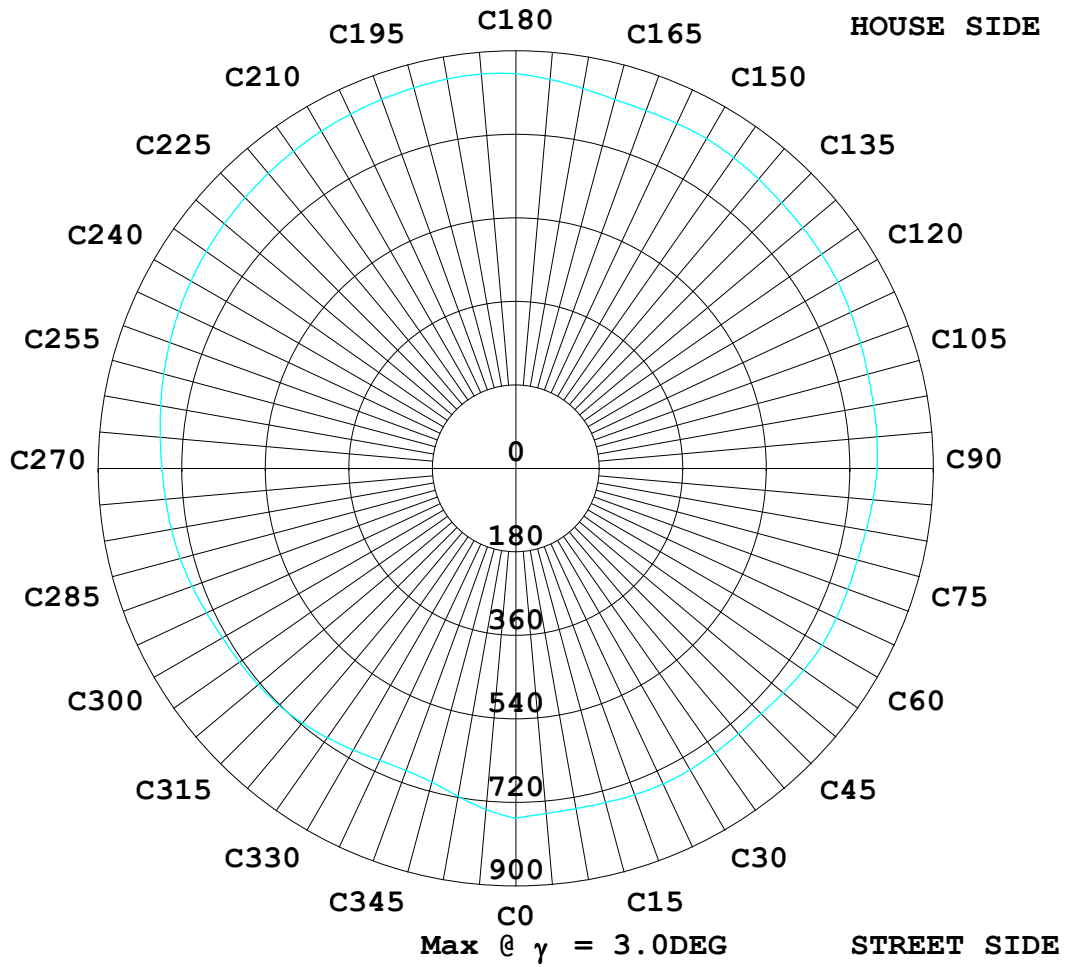
Test System: LSG-1600
 Temperature: 23.4 DEG
 Operators: FATMA KARA
 Test Date: 01-08-2014

Test Set: 2.0 deg/s C-Gamma (TYPE C)
 Humidity: 51%
 Test Distance: 9.545 m
 Remarks: CG1 Z503 G 25D 4W 220VAC 50HZ IP65

ISOCANDELA DIAGRAM

Report number: 0000113

MANUFACTURER: Fiberli	Address: PSL ELEKTRONİK ANTALYA	
NAME: CG1 Z503 G 25D 4W 220VAC 50HZ IP65	TYPE: CROMA GARDENA	WEIGHT:
SPECIFICATION: CROMA GARDENA 1	DIMENSION: 58X130mm 77R	SERIAL No.: 7878175



Test System: LSG-1600
 Temperature: 23.4DEG
 Operators: FATMA KARA
 Test Date: 01-08-2014

Test Set: 2.0deg/s C-Gamma (TYPE C)
 Humidity: 51%
 Test Distance: 9.545 m
 Remarks: CG1 Z503 G 25D 4W 220VAC 50HZ IP65

LUMINOUS DISTRIBUTION INTENSITY DATA

Report number: 0000113

MANUFACTURER: Fiberli	Address: PSL ELEKTRONİK ANTALYA	
NAME: CG1 Z503 G 25D 4W 220VAC 50HZ IP65	TYPE: CROMA GARDENA	WEIGHT:
SPECIFICATION: CROMA GARDENA 1	DIMENSION: 58X130mm 77R	SERIAL No.: 7878175

UNIT: cd

C (DEG) γ (DEG)	0	15	30	45	60	75	90	105	120	135	150	165	180	195	210
0.0	815	812	811	804	803	796	792	787	783	781	776	777	815	812	811
5.0	685	673	685	681	697	704	730	746	779	799	821	830	828	832	818
10.0	442	435	442	424	437	457	505	508	537	571	622	631	568	586	593
15.0	275	279	270	263	261	259	285	299	312	327	362	371	310	336	337
20.0	179	156	158	148	159	145	150	148	168	160	173	186	158	175	163
25.0	88.2	82.9	77.5	74.6	73.7	75.2	70.4	72.2	71.7	70.2	70.5	72.6	64.5	72.0	66.5
30.0	44.7	46.1	45.6	41.5	38.7	39.5	43.1	37.0	35.8	40.4	44.7	46.7	31.2	42.5	37.1
35.0	33.0	25.1	26.7	23.8	28.5	22.3	24.5	21.5	27.2	21.0	24.1	21.6	25.0	22.8	21.7
40.0	20.7	18.1	20.5	17.6	18.4	16.2	19.0	15.1	18.2	17.0	20.5	16.3	15.2	17.4	16.5
45.0	14.7	14.0	15.4	13.3	13.5	12.7	13.9	12.5	13.4	13.3	15.4	13.4	11.4	14.1	13.0
50.0	11.8	10.1	10.8	9.74	10.7	9.38	10.4	9.29	10.8	9.56	10.9	9.93	9.56	11.0	9.47
55.0	9.11	7.28	8.29	7.10	8.47	7.37	8.65	7.28	8.47	7.19	8.56	7.47	7.47	8.65	7.56
60.0	7.28	5.83	6.83	5.55	7.01	6.01	7.10	5.92	7.01	5.73	7.01	6.01	6.19	7.19	6.10
65.0	5.92	4.73	5.73	4.64	5.55	5.01	6.01	4.82	5.64	4.64	5.92	4.73	4.91	6.10	5.19
70.0	4.91	3.91	4.91	3.91	4.73	3.82	4.91	3.82	4.73	3.91	5.01	4.09	4.00	4.82	4.19
75.0	3.64	3.18	3.91	3.18	3.73	2.91	3.46	3.00	3.73	3.27	4.19	3.27	3.09	3.73	2.82
80.0	3.00	2.45	3.09	2.45	3.09	2.36	3.00	2.36	3.00	2.45	3.27	2.45	2.36	3.00	2.36
85.0	2.82	2.18	2.73	2.18	2.73	2.18	2.73	2.09	2.73	2.18	2.73	2.18	2.18	2.73	2.18
90.0	2.55	2.09	2.55	2.00	2.55	2.00	2.55	2.00	2.55	2.00	2.55	2.09	2.09	2.55	2.00
95.0	2.55	2.00	2.45	2.09	2.45	2.00	2.45	2.00	2.45	2.00	2.45	2.00	2.09	2.55	2.00
100.0	2.45	2.00	2.45	2.00	2.45	2.00	2.45	2.00	2.45	2.00	2.36	2.00	2.09	2.45	2.00
105.0	2.45	2.00	2.36	2.00	2.45	2.00	2.45	2.00	2.45	2.00	2.36	2.00	2.09	2.45	2.00
110.0	2.45	2.00	2.36	2.09	2.36	2.00	2.45	2.00	2.36	2.09	2.36	2.00	2.09	2.45	2.00
115.0	2.36	2.00	2.36	2.09	2.36	2.00	2.36	2.00	2.36	2.00	2.36	2.00	2.09	2.36	2.00
120.0	2.36	2.09	2.36	2.09	2.27	2.09	2.36	2.09	2.36	2.00	2.36	2.09	2.18	2.36	2.00
125.0	2.36	2.09	2.27	2.00	2.36	2.09	2.36	2.09	2.36	2.09	2.36	2.00	2.18	2.36	2.09
130.0	2.27	2.09	2.36	2.09	2.36	2.09	2.27	2.09	2.27	2.09	2.27	2.09	2.18	2.36	2.09
135.0	2.27	2.09	2.36	2.09	2.27	2.09	2.36	2.09	2.27	2.09	2.27	2.09	2.18	2.36	2.09
140.0	2.45	2.18	2.36	2.18	2.27	2.18	2.36	2.18	2.27	2.18	2.27	2.18	2.27	2.36	2.18
145.0	2.45	2.27	2.45	2.27	2.36	2.18	2.36	2.18	2.36	2.27	2.36	2.18	2.27	2.36	2.27
150.0	2.55	2.36	2.55	2.45	2.55	2.36	2.55	2.36	2.45	2.36	2.45	2.36	2.45	2.45	2.36
155.0	2.73	2.64	2.73	2.64	2.73	2.55	2.64	2.55	2.64	2.45	2.64	2.45	2.55	2.64	2.45
160.0	2.91	2.82	2.91	2.82	2.91	2.73	2.82	2.73	2.82	2.73	2.73	2.64	2.73	2.82	2.73
165.0	3.09	3.00	3.00	2.91	3.00	2.91	3.00	2.91	3.00	2.91	2.91	2.82	3.00	3.00	2.91
170.0	3.09	3.09	3.09	3.00	3.09	3.00	3.09	3.00	3.09	3.00	3.00	3.00	3.09	3.09	3.00
175.0	3.18	3.09	3.00	3.00	3.09	3.09	3.18	3.09	3.09	3.00	3.09	3.00	3.18	3.09	3.09
180.0	3.18	3.09	3.09	3.09	3.09	3.09	3.09	3.09	3.00	3.00	3.09	3.09	3.27	3.09	3.00

Test System: LSG-1600
 Temperature: 23.4 DEG
 Operators: FATMA KARA
 Test Date: 01-08-2014

Test Set: 2.0deg/s C-Gamma (TYPE C)
 Humidity: 51%
 Test Distance: 9.545 m
 Remarks: CG1 Z503 G 25D 4W 220VAC 50HZ IP65

LUMINOUS DISTRIBUTION INTENSITY DATA

Report number: 0000113

MANUFACTURER: Fiberli	Address: PSL ELEKTRONİK ANTALYA	
NAME: CG1 Z503 G 25D 4W 220VAC 50HZ IP65	TYPE: CROMA GARDENA	WEIGHT:
SPECIFICATION: CROMA GARDENA 1	DIMENSION: 58X130mm 77R	SERIAL No.: 7878175

UNIT: cd

C (DEG) γ (DEG)	225	240	255	270	285	300	315	330	345
0.0	804	803	796	792	787	783	781	776	777
5.0	804	776	751	720	701	669	649	620	621
10.0	587	545	529	496	468	437	429	402	378
15.0	333	312	316	308	286	273	281	265	255
20.0	181	174	188	171	179	169	158	140	146
25.0	78.1	80.7	80.3	75.2	87.7	76.9	83.3	78.1	75.9
30.0	44.4	37.1	52.4	50.6	46.5	39.4	46.1	40.6	43.8
35.0	24.6	27.6	26.5	24.6	26.4	28.6	26.8	24.5	24.8
40.0	18.4	16.5	20.6	19.7	19.9	17.3	18.2	17.0	18.4
45.0	15.3	12.4	16.2	14.5	15.7	12.3	14.6	12.5	14.0
50.0	11.4	10.2	11.8	9.83	11.6	9.93	11.2	9.65	10.7
55.0	9.01	7.92	8.74	7.47	8.92	7.83	9.01	7.83	8.74
60.0	7.47	6.28	7.01	5.92	6.92	6.37	7.37	6.37	6.92
65.0	6.01	5.01	5.83	5.10	5.64	4.91	6.10	5.28	5.92
70.0	4.82	4.09	4.91	4.28	4.91	4.00	4.64	4.19	4.46
75.0	3.73	3.09	4.09	3.37	4.00	3.00	3.55	2.64	3.37
80.0	3.09	2.45	3.09	2.45	3.09	2.36	2.91	2.18	2.82
85.0	2.82	2.18	2.73	2.27	2.82	2.18	2.64	2.09	2.73
90.0	2.64	2.09	2.55	2.09	2.55	2.00	2.55	2.00	2.55
95.0	2.45	2.00	2.45	2.00	2.45	2.00	2.45	2.00	2.45
100.0	2.45	2.00	2.45	2.09	2.45	2.00	2.45	2.00	2.45
105.0	2.45	2.00	2.45	2.00	2.36	2.00	2.45	2.00	2.45
110.0	2.36	2.00	2.36	2.00	2.36	2.00	2.36	2.00	2.36
115.0	2.36	2.09	2.36	2.09	2.36	2.09	2.36	2.00	2.36
120.0	2.27	2.09	2.36	2.00	2.36	2.09	2.36	2.00	2.36
125.0	2.36	2.00	2.27	2.09	2.27	2.09	2.36	2.09	2.27
130.0	2.27	2.09	2.36	2.09	2.27	2.09	2.27	2.09	2.27
135.0	2.36	2.09	2.27	2.09	2.27	2.09	2.27	2.09	2.27
140.0	2.36	2.09	2.36	2.18	2.27	2.18	2.27	2.18	2.27
145.0	2.36	2.18	2.36	2.27	2.36	2.18	2.36	2.27	2.36
150.0	2.45	2.36	2.45	2.36	2.45	2.36	2.55	2.36	2.55
155.0	2.64	2.45	2.64	2.45	2.55	2.55	2.73	2.55	2.64
160.0	2.82	2.73	2.82	2.64	2.82	2.73	2.91	2.82	2.82
165.0	3.00	2.82	2.91	2.91	2.91	2.91	3.00	2.91	3.00
170.0	3.09	2.91	3.09	3.00	3.00	2.91	3.00	2.91	3.09
175.0	3.09	3.00	3.09	3.09	3.00	3.00	3.00	3.00	3.00
180.0	3.09	3.00	3.09	3.09	3.09	3.00	3.09	3.00	3.09

Test System: LSG-1600
 Temperature: 23.4 DEG
 Operators: FATMA KARA
 Test Date: 01-08-2014

Test Set: 2.0deg/s C-Gamma (TYPE C)
 Humidity: 51%
 Test Distance: 9.545 m
 Remarks: CG1 Z503 G 25D 4W 220VAC 50HZ IP65