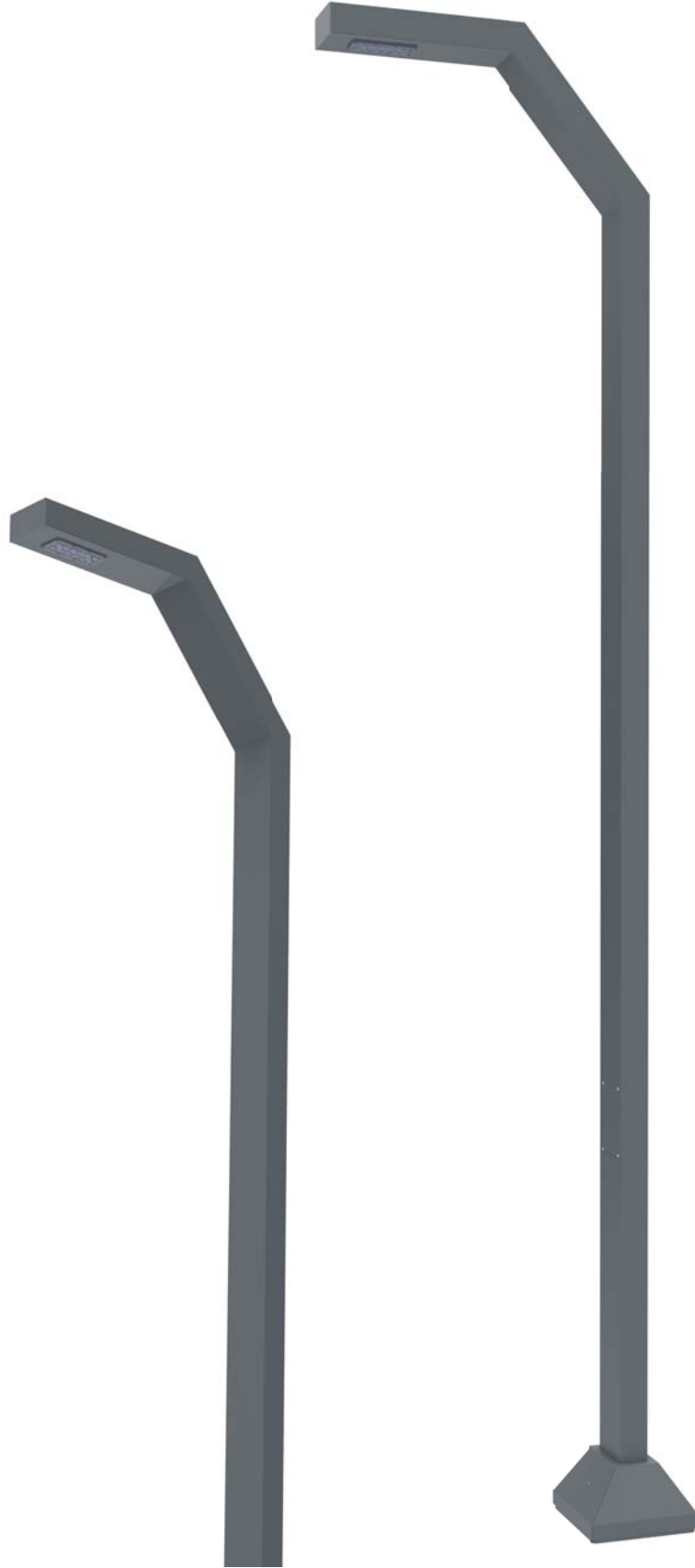




Eagle S

Park&Bahçe&Sokak Aydınlatması | Modern Seri
Park&Garden&Street Lighting | Modern Series



Eagle S

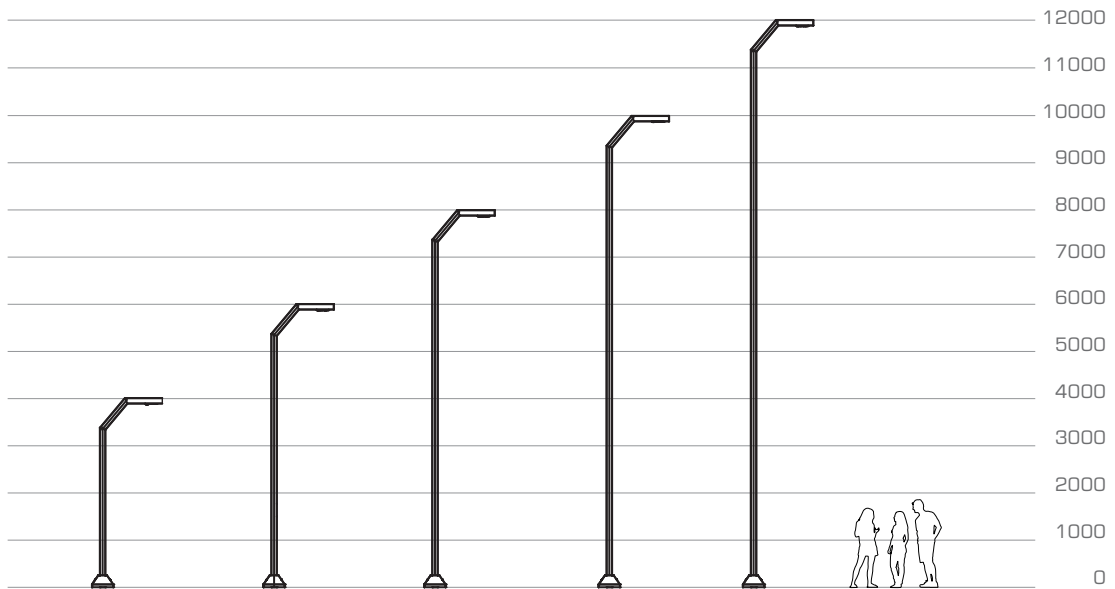
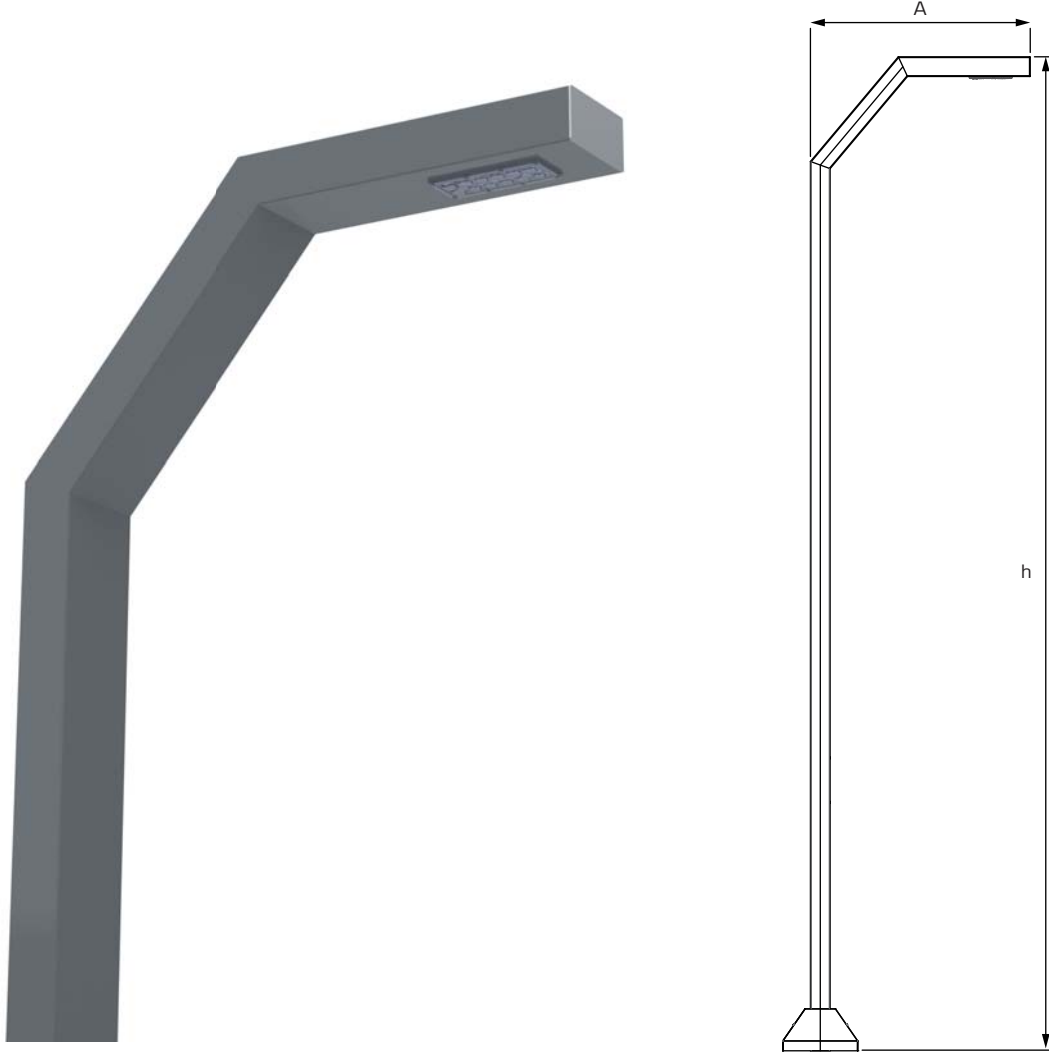
Park&Bahçe&Sokak Aydınlatması | Modern Seri
Park&Garden&Street Lighting | Modern Series





Eagle S

Park&Bahçe&Sokak Aydınlatması | Modern Seri
Park&Garden&Street Lighting | Modern Series



Eagle S

Park&Bahçe&Sokak Aydınlatması | Modern Seri
Park&Garden&Street Lighting | Modern Series



Teknik Veriler | Technical Data

Model Model	Güç Power	Işık Akısı Lumen Flux	Uzunluk (h-A) Length
Eagle S	35W	4200lm	4m-0,9m
Eagle S	70W	8400lm	6m-1,1m
Eagle S	70W	8400lm	8m-1,2m
Eagle S	105W	12600lm	10m-1,2m
Eagle S	140W	16800lm	12m-1,2m

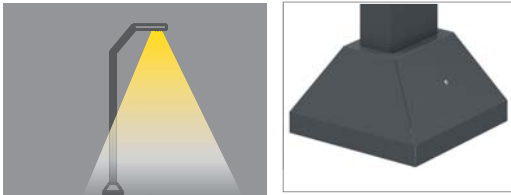
Mekanik özellikler

- Tercihe göre korozyona dayanıklı alüminyum ekstrüzyon veya çelik profil gövde
- Elektronik bileşenleri soğutmak için mükemmel ısı dağılımı
- Isıya ve darbeye dayanıklı IP Lens grubu
- Paslanmaz vidalar
- Silikon conta
- Isı geçirgenliği yüksek elektrostatik polyester toz boya
- EN-60598 Avrupa Standartlarına uygundur
- Mekanik dayanım direnci IK08
- Neme ve toza karşı koruma sınıfı IP66
- Elektriksel koruma sınıfı Class I

Mechanical properties

- Corrosion resistant die-cast aluminium extrusion body or stainless steel body
- Excellent heat dissipation for cooling electronic components
- Impact and heat resistant IP lens group
- Stainless steel screws
- Waterproof and durable silicone gaskets
- Electrostatic polyester powder coating with high thermal conductivity
- In compliance with European Standards EN-60598
- Mechanical impact resistance IK08
- Protection level IP66
- Electrical protection Class I

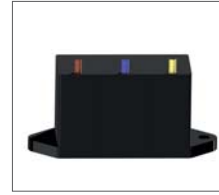
Ürün detayları | Product details



Aksesuarlar | Accessories



Sigorta
Fuse



Parafudr
Surge protection device

